

KVM VIRTUAL MACHINE INSTALLATION

At Swiss Layer, we believe clients should have the ability to setup their virtual machines from scratch, in a personalized manner.

So, instead of building this with Cloud-Init, we decided to give clients the ability to install their machines however they see fit.

We have encountered many cases where clients requested FDE (Full Disk Encryption) which is not a requirement from every client, and for which Cloud-Init is not very practical.

That being said, this is how you install your Virtual Machine from scratch.

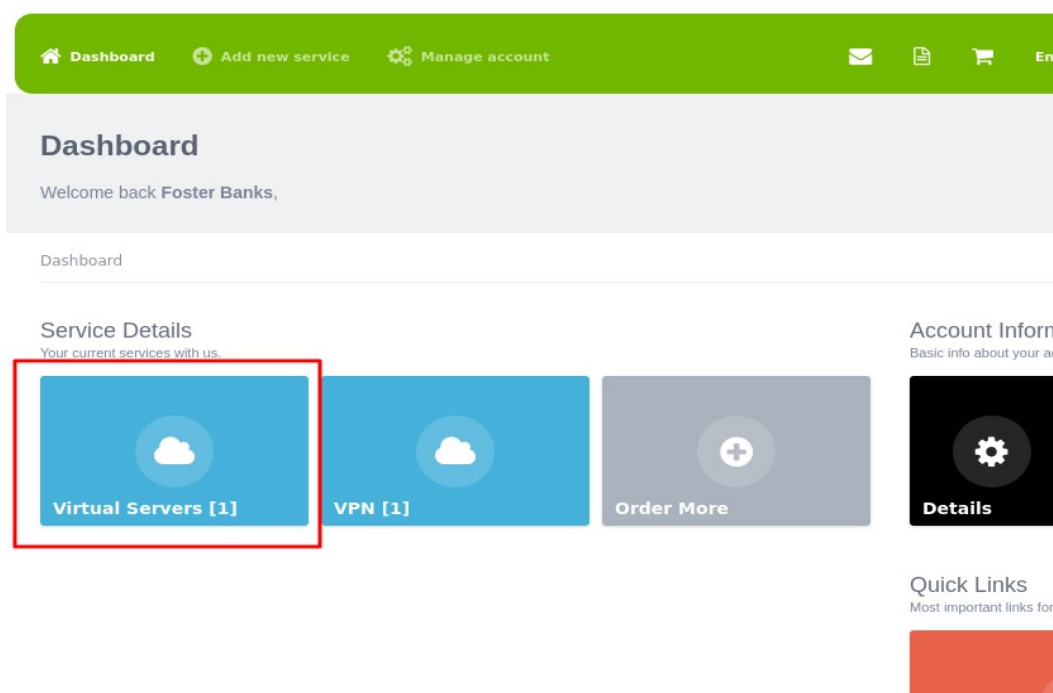
NOTE: This guide assumes you have a basic understanding of how to install an operating system on a computer and that you have already purchased the VM. This guide does not cover the steps to load an OS, but merely points to the locations on our control panel, where you will find the necessary information such as network details etc, to get your VM online.

This guide applies to: Windows and Linux “KVM” Virtual Machines.

1. You must be logged into your Control Panel:

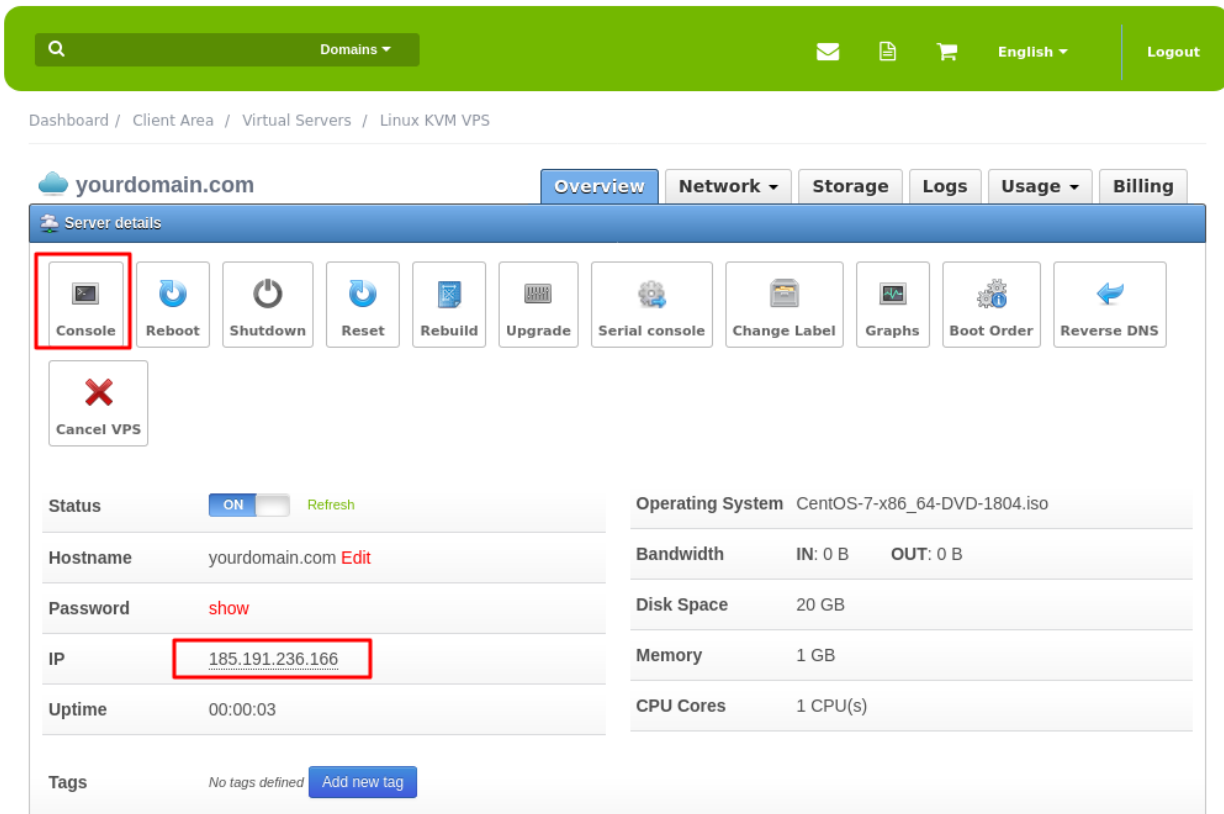
<https://support.swisslayer.com/index.php?/clientarea/> for this you need to use the email you registered with.

2. You will need to click on your “Virtual Servers” products as shown below:

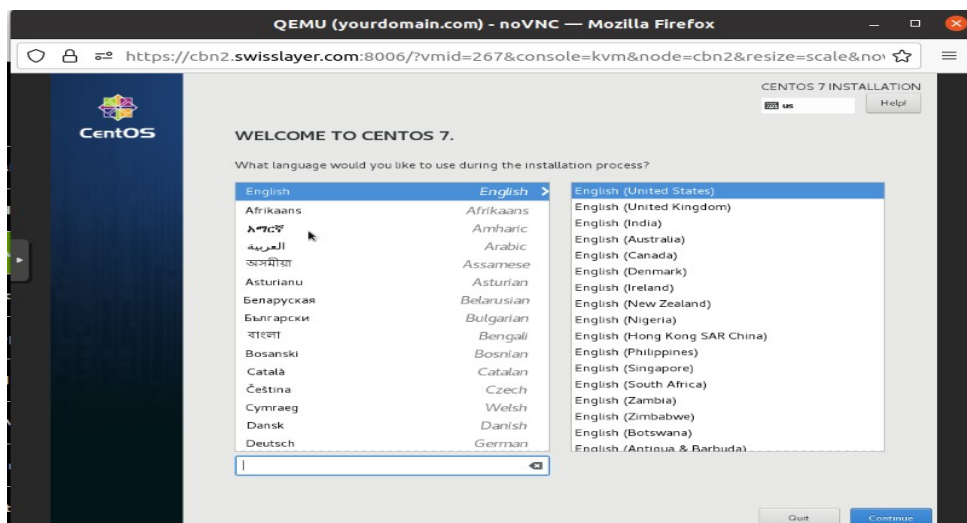


3. After this, you need to select the Product you just purchased by clicking on its name. (not on the its hostname)

4. Here you will be presented with the available options for your VM, make a note of its dedicated IP Address, You will need to make use of this so take a note of it. You will need to click on the “Console” button in order to begin the installation of your VM as shown below:



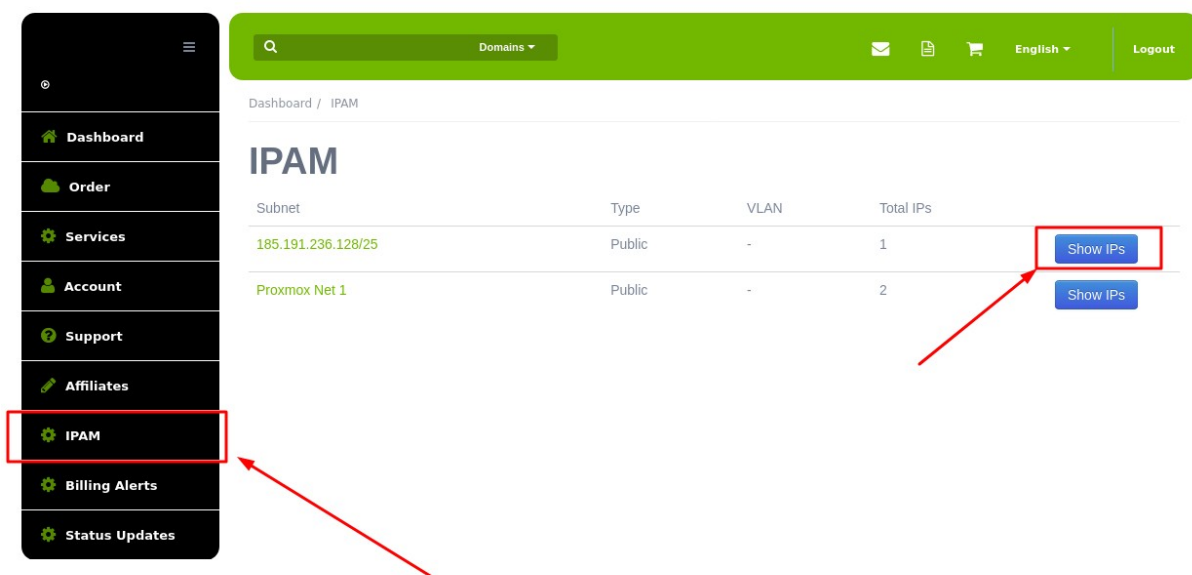
5. Having taken notes of the IP Address, you should have the console open, you will see the Operating System installation prompt.



6. From here, You can install the installation process of your VM.
Once you have finished your Disk Partitions manually or automatic, you need to setup the network for your VM. Here comes handy that IP you saw earlier.

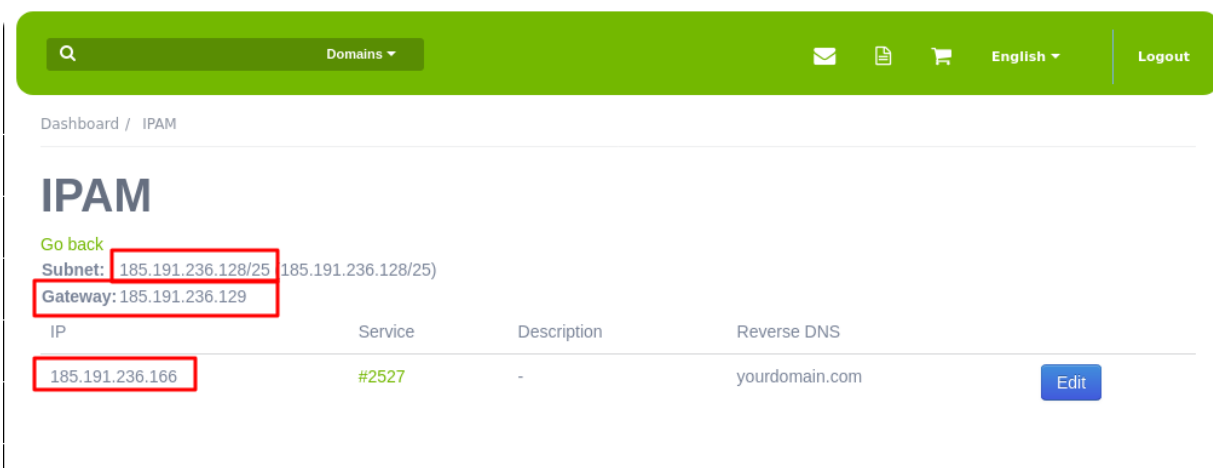
NOTE: All our IP Addresses are static, there is now DHCP anywhere in our network. Please also note, you should not use any IP Address other than the one assigned to your account by our system.

So, now you have the IP, what about the Netmask and Gateway?
For this you must Click on: IPAM -- → Show IP's as shown below:



From here, you can notice three things:

- This network PREFIX is a /25 (This is important)
- The Gateway you need to configure on this VM. (185.191.236.129)
- The IP Address of your VM.

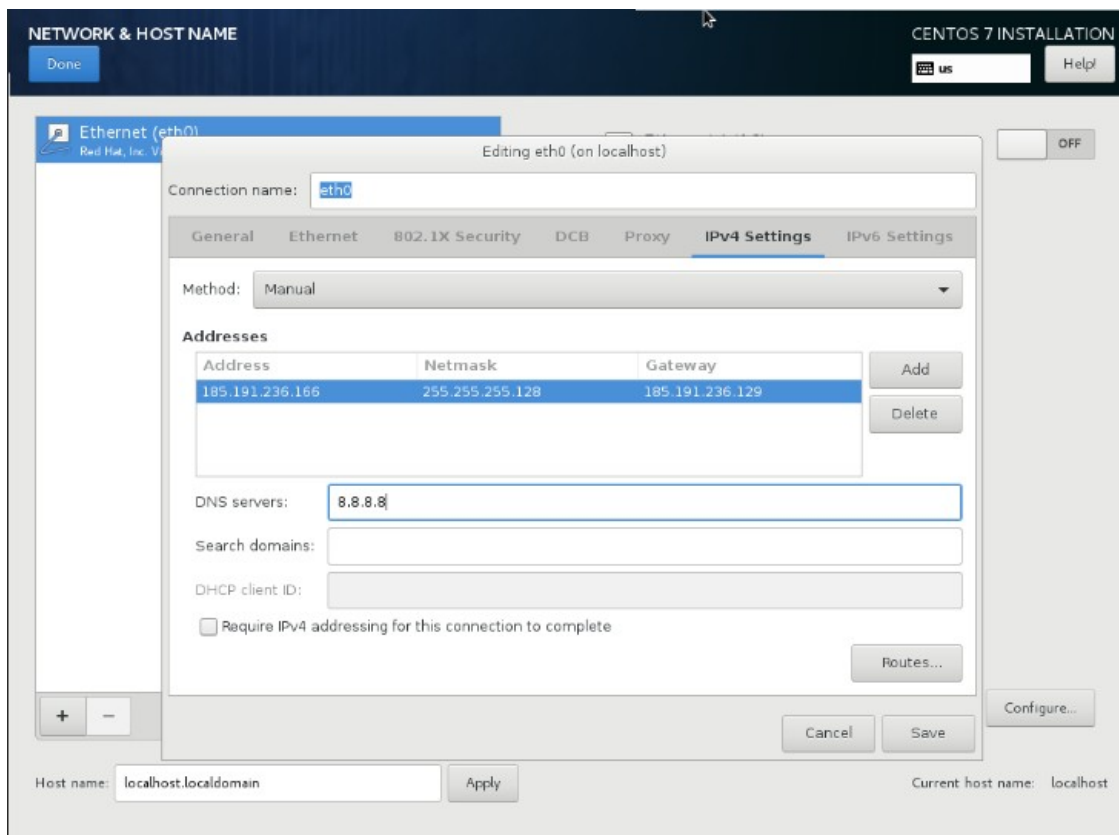


You have almost everything you need to configure the network on your VM, you are missing the Netmask, how do you get that?

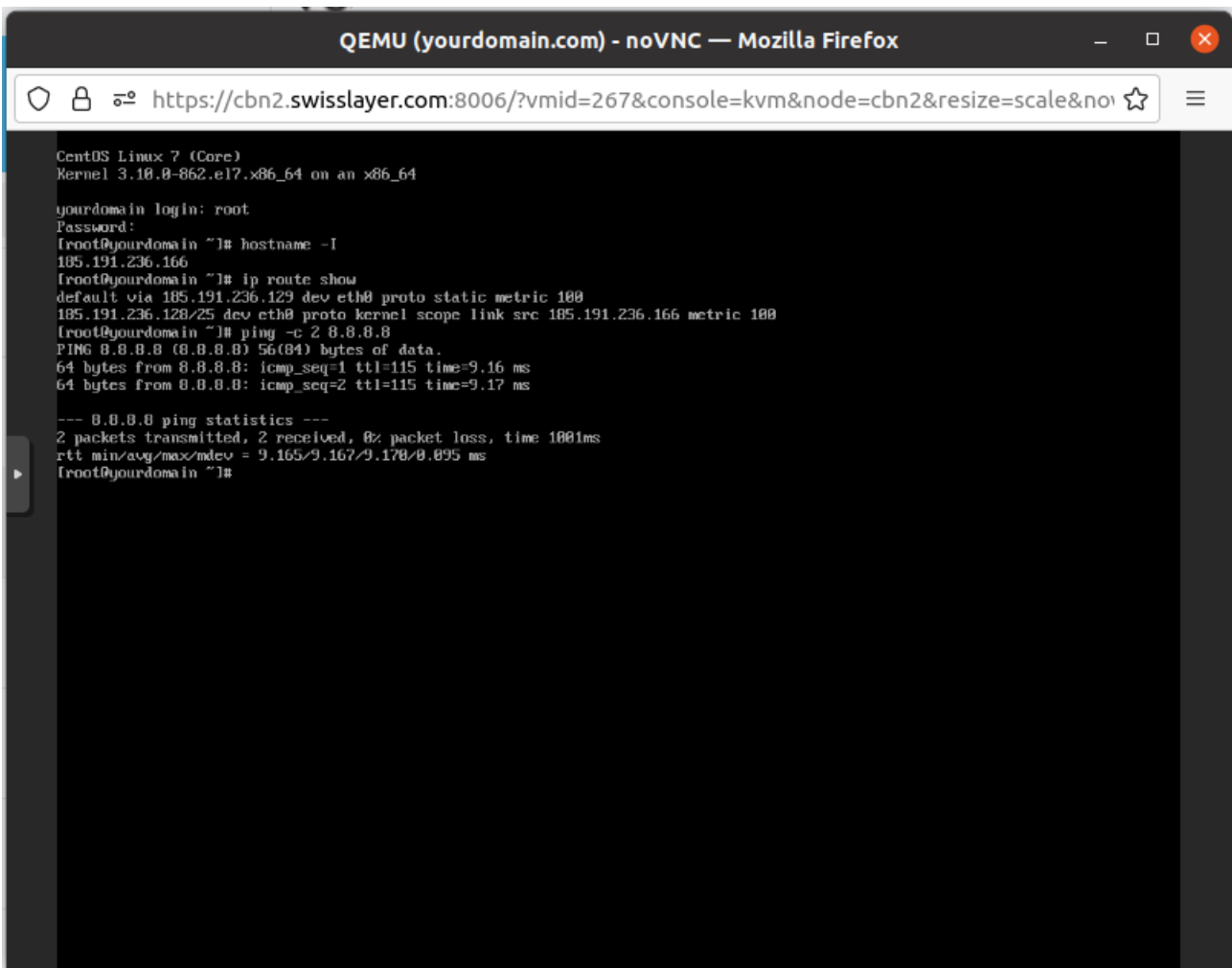
Depending on the Network Prefix you will know which subnet mask to use. Here we include the most common network prefixes used:

Network Prefix	Netmask
/30	255.255.255.252
/29	255.255.255.248
/28	255.255.255.240
/27	255.255.255.224
/26	255.255.255.192
/25	255.255.255.128
/24	255.255.255.0

As you can see, the subnet mask we are using in this case is 255.255.255.128, of course, it can be any other, depending on the network allocation. Now, with all the info we need, we proceed to finish the installation and get this VM online. We need to save the changes and proceed with the rest of the installation.



7. Once the VM is installed, we can verify that its online.



```
QEMU (yourdomain.com) - noVNC — Mozilla Firefox
https://cbn2.swisslayer.com:8006/?vmid=267&console=kvm&node=cbn2&resize=scale&no

CentOS Linux 7 (Core)
Kernel 3.10.0-862.el7.x86_64 on an x86_64

yourdomain login: root
Password:
[root@yourdomain ~]# hostname -I
185.191.236.166
[root@yourdomain ~]# ip route show
default via 185.191.236.129 dev eth0 proto static metric 100
185.191.236.128/25 dev eth0 proto kernel scope link src 185.191.236.166 metric 100
[root@yourdomain ~]# ping -c 2 8.8.8.8
PING 8.8.8.8 (8.8.8.8) 56(84) bytes of data:
64 bytes from 8.8.8.8: icmp_seq=1 ttl=115 time=9.16 ms
64 bytes from 8.8.8.8: icmp_seq=2 ttl=115 time=9.17 ms

--- 8.8.8.8 ping statistics ---
2 packets transmitted, 2 received, 0% packet loss, time 1001ms
rtt min/avg/max/mdev = 9.165/9.167/9.178/0.095 ms
[root@yourdomain ~]#
```

Of course, if you would like us to install the VM for you, we are happy to do so.

If you have any questions, please open a ticket and we will be happy to assist you.